



Star cast lining up

Kiwi music legends Tim Finn, Bic Runga and Dave Dobbyn will play at The Mud House Winery & Cafe at Waipara on February 13.

The concert is part of the nationwide Winery Tour.

It has been almost a decade since the legendary trio first shared the stage, performing their own and each others' hits, together on stage throughout the entire performance.

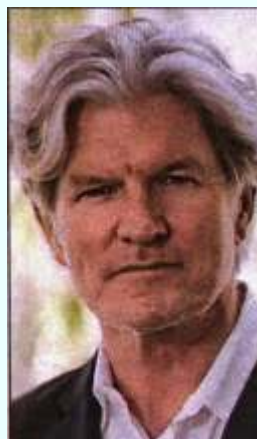
Finn, Runga and Dobbyn have already started rehearsals and promise a two-hour, back-to-back selection of all of their famous hits, songs that have secured them not only scores of awards but have cemented them as New Zealand music icons.

Also joining the 2010 Winery Tour will be Boh Runga, who will be joined on stage by Supergroove front man and solo star Che Fu.

Co-promoter Brent Eccles said it is going to be the biggest winery tour yet.

"You couldn't find a similarly talented line-up of artists to tour New Zealand together."

Information and tickets are available from the Winery Tour website winerytour.co.nz and Ticketmaster.



Music great: Heading to Waipara as part of the 2010 Winery Tour is Tim Finn.

■ To be in to win a double pass to the Winery Tour concert at The Mud House Winery & Cafe, Waipara on February 13, email win@themail.co.nz or write to: Winery Tour concert, *Coastal Mail*, Private Bag 4722, Christchurch 8140.
 Entries close December 4.



Christchurch Mail - Coastal
Wednesday 18/11/2009
Page: 19
Section: General News
Region: Christchurch
Type: Suburban
Size: 158.40 sq.cms.
Frequency: --W----

Brief: WINETOUR
Page 2 of 2



Dynamic duo: Che Fu and Boh Runga.